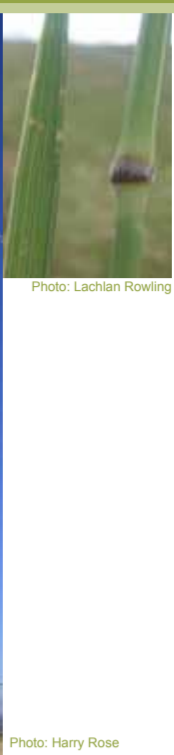




Native Wheatgrass
Elymus scaber
Habitat: grows on most soil types, particularly in moist and shaded areas of paddocks.
Growth Habit: a loosely tufted grass up to 100cm height; highly variable in appearance.
Seed Head: a narrow spike to 25cm long; spikelets with many awned florets; awns straight when young and curved at maturity.
Leaves: leaves often have a half twist; flag leaf (directly below seed head) sticks out at a right angle.
Other Distinctive Features: auricles present.
Forage Value: a palatable, high quality grass valued for winter and spring feed. Types on shallow soils tend to have harsher leaves. Often preferentially grazed, but is avoided after it runs to head in spring.



Rough Speargrass
Austrostipa scabra
Habitat: widespread and common occurring on rocky outcrops, westerly aspects and lighter textured shallow or well drained soils; common in low ground cover positions with limited soil depth.
Growth Habit: erect tufted grass to 80cm tall.
Seed Head: a moderately contracted to open panicle to 30cm long; spikelets are 10-15cm long, sharply pointed with a long sickle shaped awn.
Leaves: leaves are very fine, long and strongly rolled; leaves are rough to touch.
Forage Value: regarded as an important native perennial species; productive in spring and summer and offers green feed in winter; forage is palatable when young but limited by the coarse textured, rolled leaves and sharply pointed seeds at maturity.



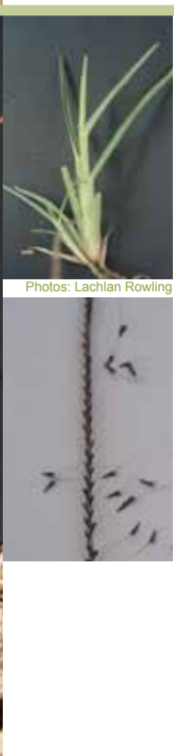
Plains Grass
Austrostipa aristaglumis
Habitat: common to dominant in native/naturalised pastures on heavy clay (particularly black earth) soils of the north slopes and plains; prefers good moisture, high fertility and neutral to alkaline pH.
Growth Habit: coarse and densely tufted to 180cm height; tussocks up to 30cm in base diameter. If underutilised, plants are often a mixture of tall senesced older growth and fresh green shoots.
Seed Head: to 55cm long and loose whorled branches when mature; seed bases are sharply pointed with awns to 4cm long and twice bent.
Leaves: to 40cm long, ribbed, generally hairless and often rough to touch.
Forage Value: can be highly productive; although sensitive to frost, fresh growth gives moderate quality feed, older feed quality declines sharply.



Wallaby Grasses
Austrodanthonia spp.
Habitat: widespread and common with a number of species occurring in NSW; some species adapted to hard, shallow soils through to species on fertile clay soils.
Growth Habit: fine leaved tufted grass to 100cm tall.
Seed Head: a contracted to open panicle; spikelets green, with pink tinges in early flowering, become fluffy white with maturity.
Leaves: grey-green to dark green and often hairy; hairy fringe at the junction of the leaf blade and leaf sheath.
Forage Value: feed values dependant on species and location (soil type); plants in fertile areas tend to respond to fertility and produce larger quantities of higher quality feed. Plants in shallow, poor soils show little response to fertiliser.



Native Millet
Panicum decompositum
Habitat: mainly occurring on heavy clay soils, in depressions and along floodplains.
Growth Habit: can form large, upright tussocks to 145cm in height; difficult to distinguish from other Panicum species including *P. queenslandicum* (Yabila grass).
Seed Head: becomes a large, open branched panicle at maturity, with spikelets commonly paired and hairless; pollen sacs are deep orange; ripe seeds are 1.5-2mm long.
Leaves: wide, mostly hairless, light blue-green (often with white mid-rib) to 50cm long and 12mm wide.
Forage Value: a productive and palatable pasture species when soil fertility and moisture are adequate - pasture quality tests indicate high levels of crude protein



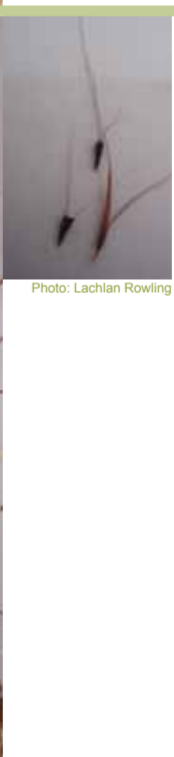
Common Windmill Grass
Chloris truncata
Habitat: widespread on many soil types; useful coloniser of bare areas following summer rain; relatively salt tolerant.
Growth Habit: tufted grass, usually less than 20cm height; contains stolons (runners) that can root down at the node.
Seed Head: windmill-like (digitate) seed head consists of 6-9 spikes that radiate out like spokes of a wheel from main stem; truncate spikelets are arranged in two rows on the underside of branches; black seeds are blunt and awned.
Leaves: hairless, pale green-blue green in colour, short and narrow with an abrupt taper at the tip (boat shaped); new leaves are folded lengthwise along the mid rib.
Forage Value: it is a valuable pasture component in drier areas



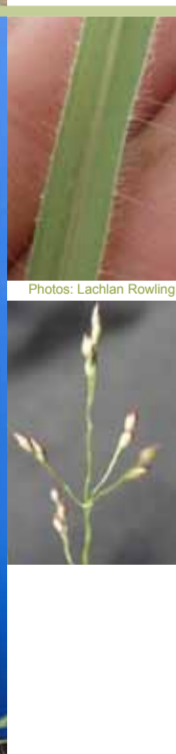
Kangaroo Grass
Themeda australis syn. Themeda triandra
Habitat: grows on most soil types; a widespread species often found in non-arable areas and landscapes that have been protected from grazing or only lightly grazed (e.g. roadsides and travelling stock reserves); considered a widespread and dominant species prior to European settlement.
Growth Habit: an erect, densely tufted grass to 150cm height.
Seed Head: contains leaf like structures (spathes) and fertile spikelets have long black awns.
Leaves: blue-ish green in summer and rust purple after frosting; leaves are folded with long hairs at the leaf-sheath junction; sheath is hairy.
Forage Value: low - moderate feed value



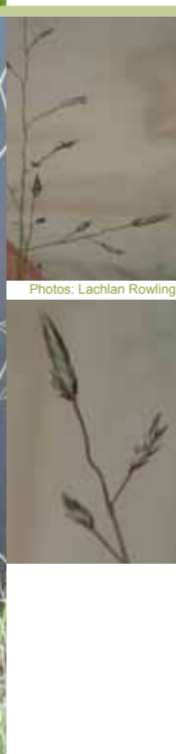
Warrego Summer Grass
Paspalidium jubiflorum
Habitat: common in paddock depressions, swamps; most productive on heavier, fertile soils; responds well to flooding and inundation.
Growth Habit: a leafy and slender tussock forming grass with erect stems growing from 30-120cm in height;
Seed Head: a closed panicle; long and narrow with up to 16 branches (each up to 4cm long) pressed against the main stem; seeds are pale green to straw coloured, are round and have no awns.
Leaves: smooth, flat and narrow, up to 25cm long; tapering to a long fine point.
Other Distinctive Features: stem joints (nodes) and leaf sheaths are hairy and long hairs surround the ligule.
Forage Value: stems and leaves are quite palatable and well utilised by cattle when short and green.



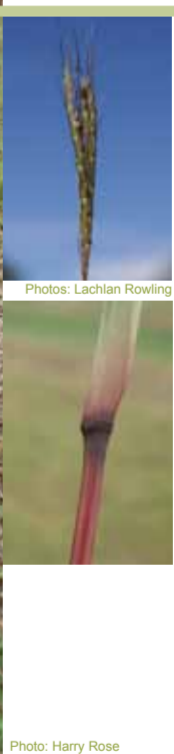
Curly Windmill Grass
Enteropogon acicularis
Habitat: occurs across a range of soil types; more common in conservatively grazed paddocks; good drought and flood tolerance, moderate frost tolerance.
Growth Habit: potentially long-lived perennial with a dense, tussock forming habit to 110cm height.
Seed Head: digitate, containing several and up to 15 branches that radiate out like spokes on a wheel across several planes. Spikelets are awned, light in colour and narrower than *Chloris truncata*.
Leaves: broad and flat, variably hairy and often a distinct blue-green; older leaves become crimped, curled or spiralled.
Forage Value: a valuable pasture species; young growth is moderately palatable; flowering plants become harsh - often left un-grazed.



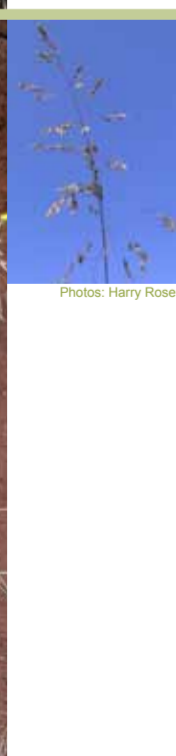
Hairy Panic
Panicum effusum
Habitat: most common in dry areas on sandy or shallow low fertility soils; found in low - moderate abundance in native pastures, woodlands or disturbed areas.
Growth Habit: a short, tufted grass to 50cm height.
Seed Head: is a wide open panicle with spikelets often paired at the end of branches.
Leaves: are flat and dull green-grey colour; leaf sheaths and nodes are hairy; there are distinctive long glandular hairs along leaf margins.
Forage Value: growth commences early in spring and provides useful and palatable herbage up until flowering; produces valuable forage even under dry conditions. Can cause photosensitisation in sheep.



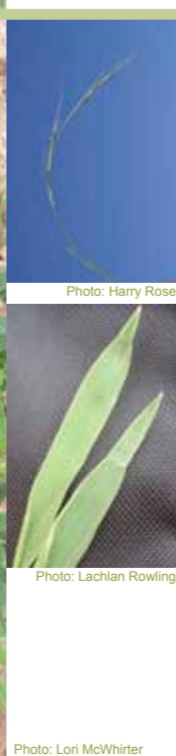
Paddock Lovegrass
Eragrostis leptostachya
Habitat: found in woodlands, native pastures and naturalised pastures; widespread on low-moderate fertility soils.
Growth Habit: a slender, tufted grass to 90cm height; prostrate growth habit common in grazed pastures.
Seed Head: consist of open, spreading branches (panicle) that is more than twice as long as broad; branches and spikelets branching approximately at right angles; spikelets often lead pencil coloured with many divisions (toothed appearance).
Leaves: leaf blades are rolled in the bud and smooth along the margins; leaf sheaths are hairy.
Forage Value: a valuable grass of high quality that can produce reasonable amounts of green material.



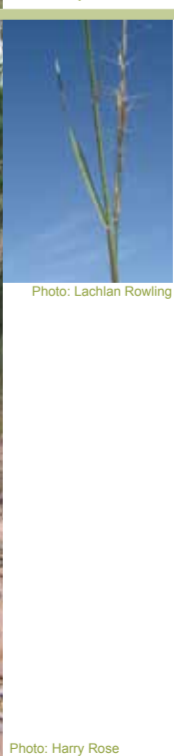
Redgrass
Bothriochloa macra / decipiens
Habitat: occurs on most soil types but often dominant on poor, lower fertility soils; frequently invades overgrazed or bare pastures when fertility levels decline; does not occur on highly acidic soils.
Growth Habit: tufted grass with prostrate basal leaves & erect wiry stems to 100cm
Seed Head: 3-4 erect branches usually pressed together; branch bases are bare; spikelets are awned and often pitted.
Leaves: leaf blades are rolled in the bud; sheath & blades have prominent mid rib.
Other Distinctive Features: stems have red, hairless nodes turning dark red after seeds fall.
Forage Value: wiry stems are of low digestibility; leaves are of high quality and readily eaten. Quality declines rapidly after running to head; very frost sensitive.



Snow or Tussock Grass
Poa sieberiana
Habitat: a widespread species often found in woodland and forest environments; more common on well drained upper slopes than lower drainage lines.
Growth Habit: a densely tufted grass to 80cm height.
Seed Head: pyramid - shaped and open, varying from green to purple in colour.
Leaves: green to grey-green, long and fine; rough to touch and without a ligule.
Forage Value: tussock forming leafy species that produced good quantities of green feed over winter and early spring; value may be severely limited due to plants ability to grow rank and unpalatable.



Weeping Grass
Microlaena stipoides
Habitat: common, especially in damp or semi-shaded areas; highly tolerant of soil acidity and exchangeable aluminium; resilient native species during drought
Growth Habit: a perennial grass of variable form often with a low growing, dense leafy tuft.
Seed Head: narrow and weeping (raceme or panicle); spikelets have two straight awns to 20mm length.
Leaves: flat lime or blue green with a boat - shaped tip and commonly a notch or pinch near the tip.
Other Distinctive Features: small auricles present.
Forage Value: an extremely valuable native species with palatable forage of excellent quality and potentially high production; can grow year round.



Three-awned Wiregrass
Aristida ramosa
Habitat: grows on poor, shallow and sandy soils of low fertility. May exist on better soils that are poorly managed.
Growth Habit: tufted up to 120cm high.
Seed Head: spikelets have a sharply pointed base and distinct three - branched awn.
Leaves: very few, coarse, narrow and often pale coloured.
Other Distinctive Features: stiff wiry stems that are often branched at the nodes (stem joint).
Forage Value: very low grazing value and often undesirable in most pastures.